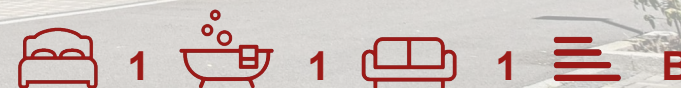


shepherds
A better home
moving experience



17 Compton Court
Hertford, SG14 2FW

40% Shared ownership £98,000



B

17 Compton Court

Hertford, SG14 2FW

SOLD BY SHEPHERDS - Stylish One-Bedroom Apartment with Private Balcony – 40% Shared Ownership

Step into modern living with this beautifully presented one-bedroom apartment, ideally situated on the third floor of a contemporary development built in 2019. Located on the west side of Hertford, this home offers the perfect balance of style, convenience, and community with access to local shops.

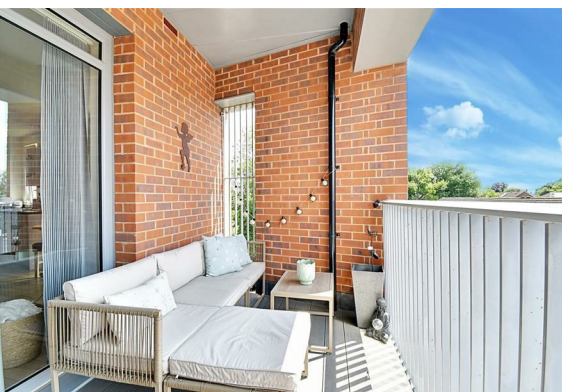
Inside, you'll find a bright and airy open-plan living space, complete with a sleek, modern kitchen and direct access to a private balcony—an ideal spot to unwind and relax. The generous double bedroom features a built-in wardrobe, while the chic, high-spec bathroom adds a touch of luxury.

With lift and stair access, a long lease of 119 years, and excellent transport links via Hertford North station, this property presents a fantastic opportunity to own a 40% share—perfect for first-time buyers ready to take that first step onto the property ladder.

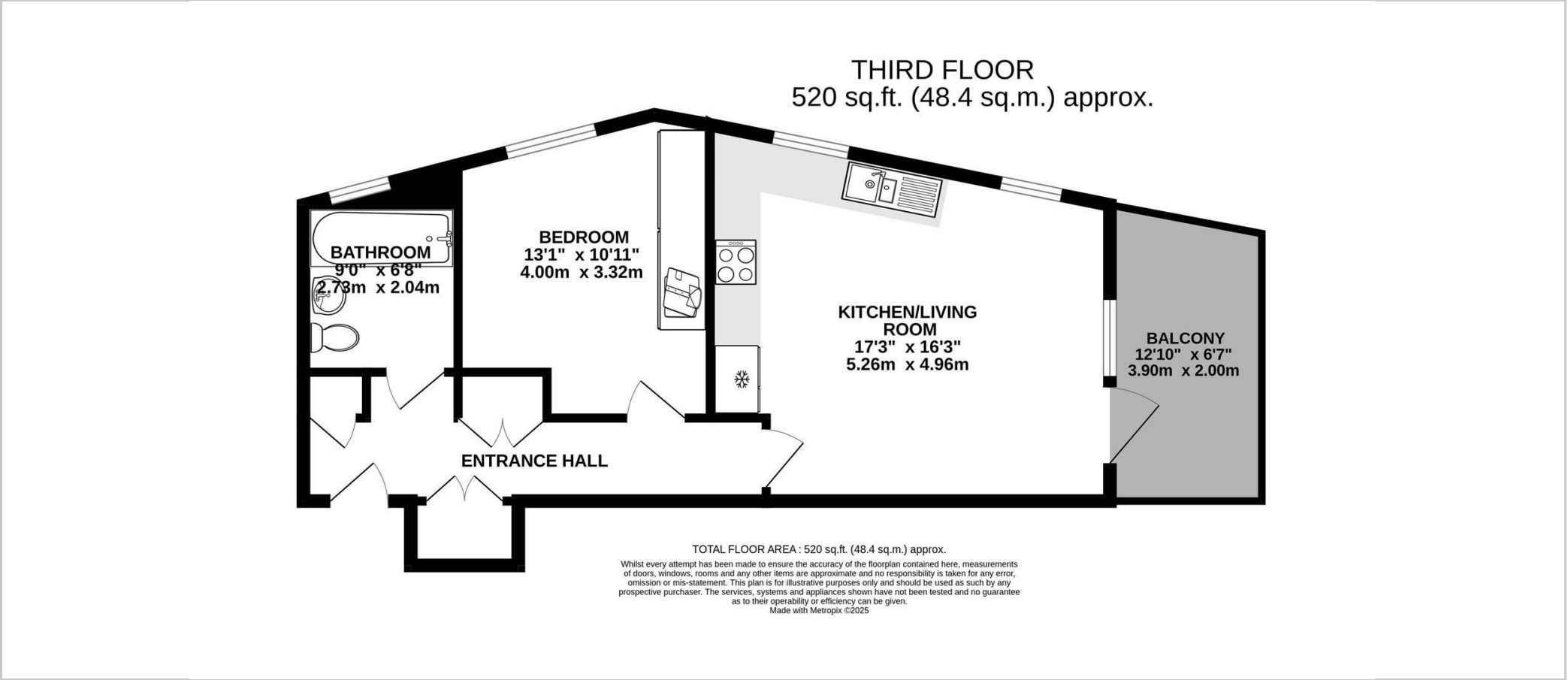




- One double bedroom third floor flat
- Modern development built in 2019
- Share of ownership with 40% equity
- Lift and stair access
- Open plan living living room with modern fitted kitchen
- Good sized private balcony
- Modern bathroom
- Allocated parking
- Lease with 119 years remaining



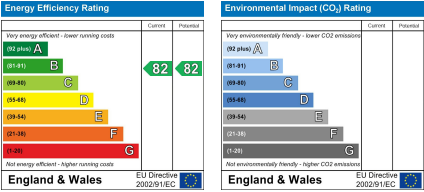
Floor Plan



Viewing

Please contact Shepherds of Hertford on 01992 551955 if you wish to arrange a viewing appointment for this property or require further information.

Energy Performance Graph



These particulars, whilst believed to be accurate are set out as a general outline only for guidance and do not constitute any part of an offer or contract. Intending purchasers should not rely on them as statements of representation of fact, but must satisfy themselves by inspection or otherwise as to their accuracy. No person in this firms employment has the authority to make or give any representation or warranty in respect of the property.

Riverside House, 6 Millbridge, Hertford, SG14 1PY
Tel: 01992 551955 Email: enquiries@shepherdsofhertford.co.uk